

HICS and Hiccups

Epidemiologists Join the Hospital Incident Command System

Kristina L. Spurgeon, MPH
Practice Specialist, Emergency Management
Regional Support Services
Kaiser Permanente Northern California



SHEA/CDC OUTBREAK RESPONSE TRAINING PROGRAM
© SHEA 2018

Financial Disclosures

- ▶ Kristina L. Spurgeon, MPH
 - ▶ Employed by Kaiser Permanente



SHEA/CDC OUTBREAK RESPONSE TRAINING PROGRAM
© SHEA 2018

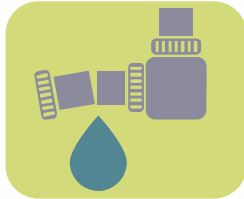
Learning Objectives

- ▶ Describe priority roles during a response
- ▶ Demonstrate the incident management process
- ▶ Describe how, where, and when epidemiologists fit into the HICS

How Do We Know Something Has Happened?



What's Really Going On?



**Broken
Water Pipe**



**Main Water
Break**



**Massive
Disruption**



**What Do
You Think?**

Are We Activating?



Is it safe?

**Can we
use daily
operations?**

How big is it?

**Command
Center**

First Steps to Take



The Command Center is open

How did you find out?



You join the Command Center

What's going on?



You get a (new) job

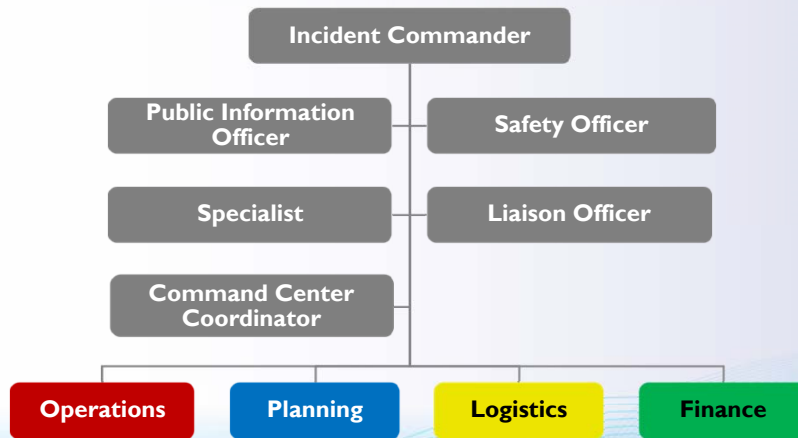
What happens once you put on that vest?



I **need** an incident commander;
I am not **the** incident commander.



Priority Roles



California Emergency Medical Services Authority. www.emsa.ca.gov/Media/default/HICS/HIMT%20Chart_02.pdf.



SHEA/CDC OUTBREAK RESPONSE TRAINING PROGRAM
© SHEA 2018

General Responsibilities

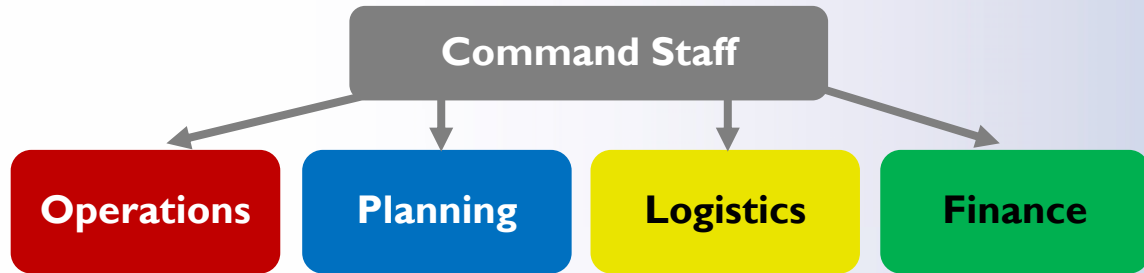


California Emergency Medical Services Authority. www.emsa.ca.gov/disaster_medical_services_division_hospital_incident_command_system.

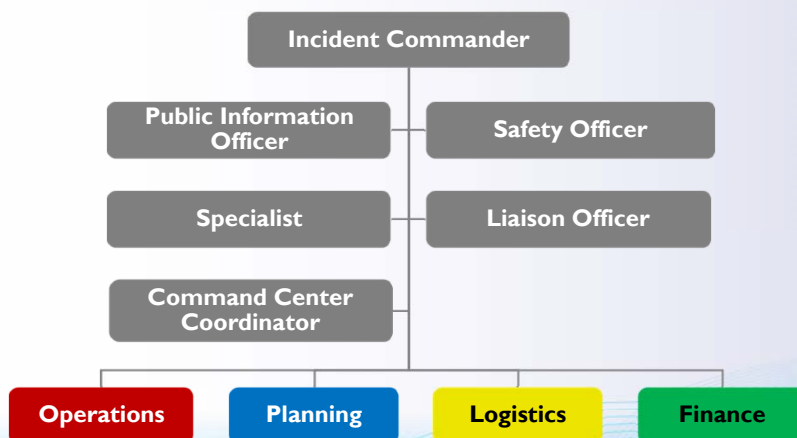


SHEA/CDC OUTBREAK RESPONSE TRAINING PROGRAM
© SHEA 2018

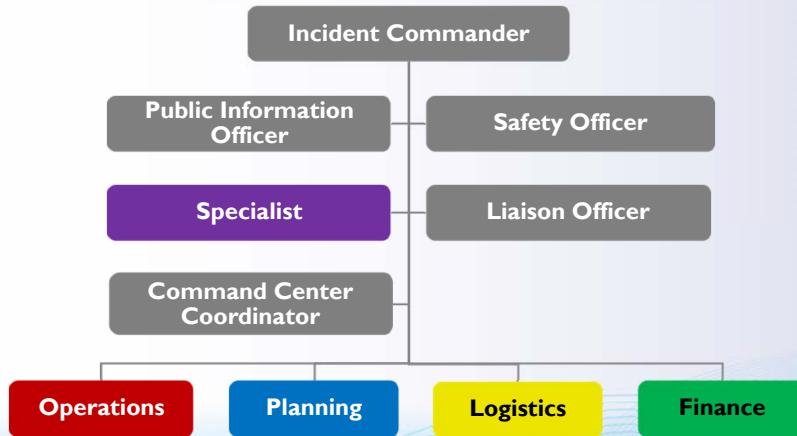
Where Might **EPI** Fit?



Where Might **EPI** Fit?



Where Might **EPI** Fit?

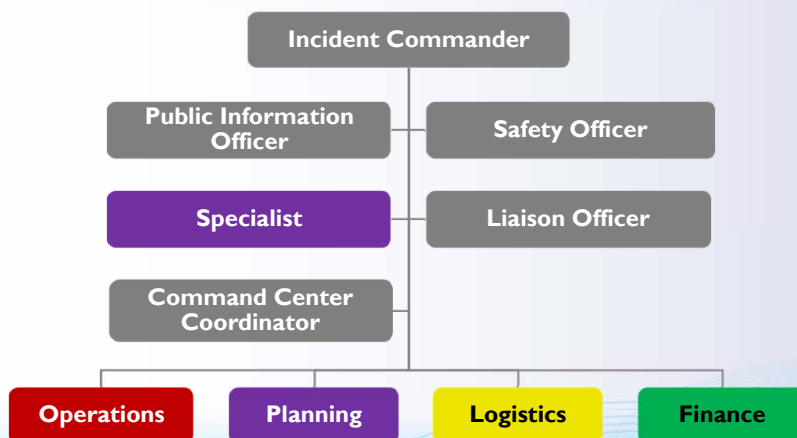


California Emergency Medical Services Authority. www.emsa.ca.gov/Media/default/HICS/HIMT%20Chart_02.pdf.



SHEA/CDC OUTBREAK RESPONSE TRAINING PROGRAM
© SHEA 2018

Where Might **EPI** Fit?

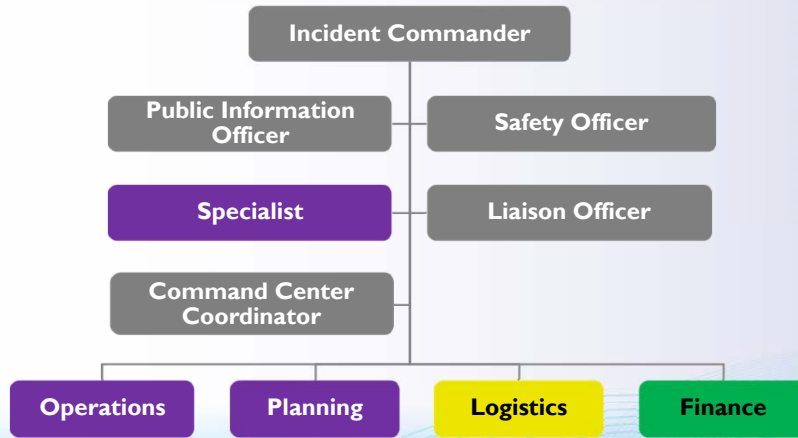


California Emergency Medical Services Authority. www.emsa.ca.gov/Media/default/HICS/HIMT%20Chart_02.pdf.



SHEA/CDC OUTBREAK RESPONSE TRAINING PROGRAM
© SHEA 2018

Where Might **EPI** Fit?

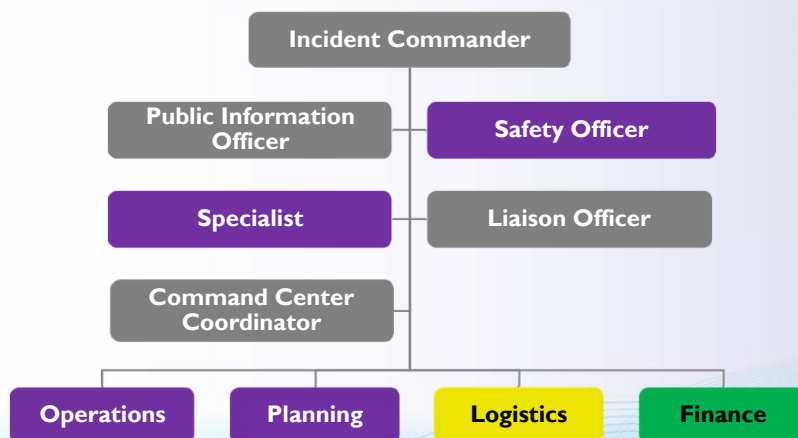


California Emergency Medical Services Authority. www.emsa.ca.gov/Media/default/HICS/HIMT%20Chart_02.pdf.



SHEA/CDC OUTBREAK RESPONSE TRAINING PROGRAM
© SHEA 2018

Where Might **EPI** Fit?



California Emergency Medical Services Authority. www.emsa.ca.gov/Media/default/HICS/HIMT%20Chart_02.pdf.



SHEA/CDC OUTBREAK RESPONSE TRAINING PROGRAM
© SHEA 2018

Incident Management—Start Here



Assess the Situation

- What happened?
- How has it impacted us?



Make a Plan

- What are our priorities?
- How are we going to do it?



Communicate

- Who needs to know?
- What do they need to know?
- How will we tell them?



Incident Management



1

Assess the situation.



2

Make objectives.



3

Share the plan.



4

Figure out how to implement the objectives.



5

Go do it. Be safe.



6

Reconvene the team. Report, assess, and review progress/challenges.



7

Add or modify objectives as needed.



8

Share the new plan. Continue to employ or modify strategies.



9

Repeat steps 6-8 until the issue is resolved.



Incident Management



Summary of Steps

Action	Primary Section
1. Assess the situation.	Planning
2. Make objectives (and write it down).	Planning
3. Share the plan.	Everyone
4. Figure out how to implement the objectives.	Everyone
5. Go do it. Be safe.	Operations/Everyone
6. Reconvene the team: schedule and hold a briefing. Report, assess, and review progress/challenges.	Planning
7. Add or modify objectives as needed.	Planning
8. Share the new plan. Continue to employ or modify strategies.	Everyone
9. Repeat steps 6-8 until the issue is resolved.	Planning



Let's Practice



Library of Congress. www.loc.gov/pictures/item/98517931.



SHEA/CDC OUTBREAK RESPONSE TRAINING PROGRAM
© SHEA 2018

Scenario Introduction



SHEA/CDC OUTBREAK RESPONSE TRAINING PROGRAM
© SHEA 2018

Summary of Steps

Action	Primary Section
1. Assess the situation.	Planning
2. Make objectives (and write it down).	Planning
3. Share the plan.	Everyone
4. Figure out how to implement the objectives.	Everyone
5. Go do it. Be safe.	Operations/Everyone
6. Reconvene the team: schedule and hold a briefing. Report, assess, and review progress/challenges.	Planning
7. Add or modify objectives as needed.	Planning
8. Share the new plan. Continue to employ or modify strategies.	Everyone
9. Repeat steps 6-8 until the issue is resolved.	Planning



Debrief/Hotwash: How did we do?



Take Home Message



SHEA/CDC OUTBREAK RESPONSE TRAINING PROGRAM
© SHEA 2018

Additional Resources

- ▶ Surge Planning Checklist. California Hospital Association. www.calhospitalprepare.org/surgechecklist
- ▶ Technical Resources, Assistance Center, and Information Exchange (TRACIE). U.S. Department of Health & Human Services Office of the Assistant Secretary for Preparedness & Response (ASPR). asprtracie.hhs.gov/
- ▶ Emergency Management Resources. The Joint Commission. www.jointcommission.org/emergency_management.aspx
- ▶ CMS Emergency Preparedness Rule: Resources at Your Fingertips. Centers for Medicare & Medicaid, U.S. Department of Health & Human Services ASPR. asprtracie.hhs.gov/documents/cms-ep-rule-resources-at-your-fingertips.pdf
- ▶ Healthcare Preparedness Capabilities National Guidance for Healthcare System Preparedness. U.S. Department of Health & Human Services ASPR. www.phe.gov/preparedness/planning/hpp/reports/documents/capabilities.pdf
- ▶ Hospital Incident Command System. California Emergency Medical Services Authority. www.emsa.ca.gov/disaster_medical_services_division_hospital_incident_command_system_resources
- ▶ HICS for Small Hospitals Documents. Association of Healthcare Emergency Preparedness Professionals. ahepp.site-ym.com/?page=IncidentCommand
- ▶ Healthcare Organization Emergency Operations Plan. U.S. Department of Health & Human Services. www.phe.gov/Preparedness/planning/mscc/handbook/chapter1/Pages/emergencymanagement.aspx
www.phe.gov/Preparedness/planning/mscc/handbook/chapter2/Pages/hcoemergen.aspx
- ▶ National Incident Management System (NIMS) and NIMS training programs. U.S. Department of Homeland Security. training.fema.gov/nims/
- ▶ NIMS Implementation for Healthcare Organizations Guidance. U.S. Department of Health & Human Services ASPR. www.phe.gov/Preparedness/planning/hpp/reports/Documents/nims-implementation-guide-jan2015.pdf
- ▶ Hospital All-Hazards Self-Assessment. Centers for Disease Control and Prevention. www.cdc.gov/phpr/healthcare/documents/hah_508_compliant_final.pdf



SHEA/CDC OUTBREAK RESPONSE TRAINING PROGRAM
© SHEA 2018